

Opening Day 2015



**MOUNTAIN VALLEY BASEBALL**  
**WOLFSVILLE • MYERSVILLE • MIDDLETOWN**



# MOUNTAIN VALLEY BASEBALL. FACTS

## Based in Myersville, MD

- Community-based youth organization
- Focus on “Character, Courage and Loyalty” message to all families
- Facilities include five (5) fields: three (3) at Doubs Park, Harp Field and Wolfsville Field

## Members of National Little League and Babe Ruth Organizations

- Maryland District 2
- Compete against Brunswick, East Frederick, Four County, Frederick, Montgomery County and Thurmont Little Leagues

## 100% Volunteer Organization

- Served approximately 160 children and families in 2015
- Anticipated 10% - 20% growth in 2016

## 100% Self-funded Organization

- Player fees and concession proceeds cover all participation costs including umpire fees, baseball supplies, field maintenance, and uniforms
- Offer Discount/Scholarship program for those unable to participate due to financial challenges

## The 2015 Season...

### Spring Baseball

- Four (4) T-Ball Teams
- Two (2) Machine Pitch Teams
- Three (3) Minors Teams
- Three (3) Majors Teams
- Three (3) Age 13-15 Babe Ruth Teams

### Fall Season

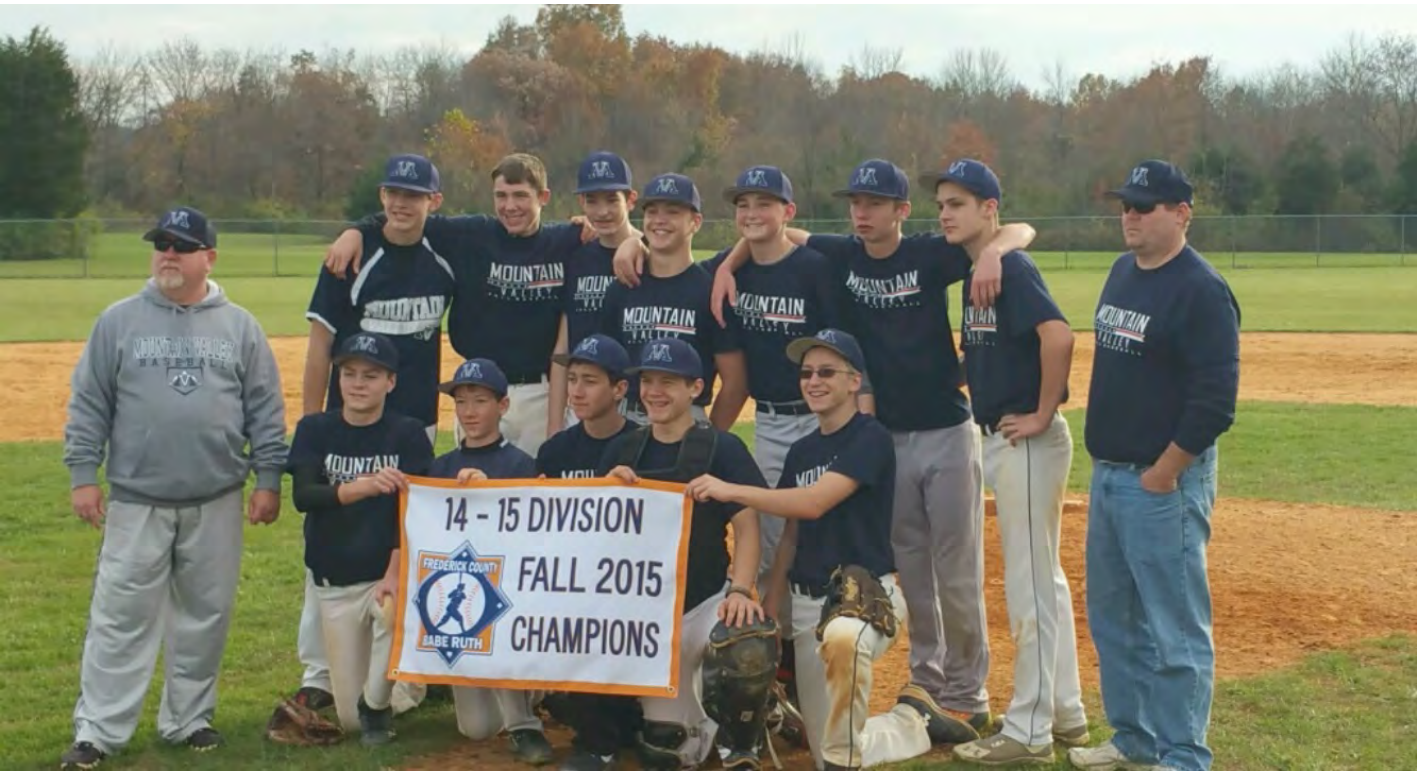
- Two (2) T-Ball Teams
- One (1) Machine Pitch Team
- One (1) Minors Team
- Two (2) Majors Teams
- Two (2) Age 13-15 Babe Ruth Teams

### Tournaments

- Emory Frye Tournament – Ages 9 -10 Team and Ages 11-12 Team
- Tournament of Champions – Minors and Majors Teams
- Ages 11-12 District 2 Tournament – Majors All Star Team
- Ages 9-10 District 2 Tournament – Minors All Star Team
- Frederick City Tournament – Majors Team





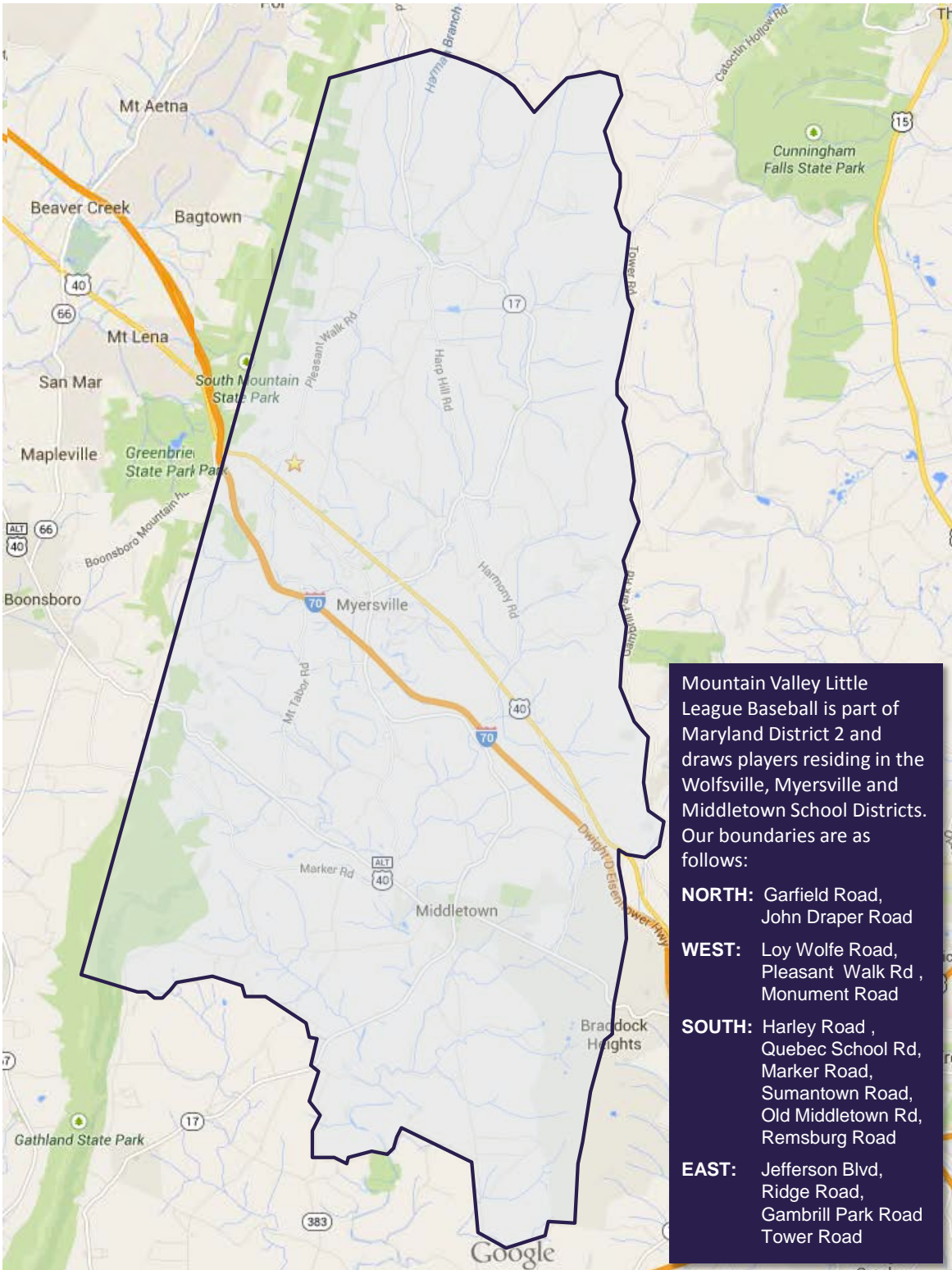


# Fall 2015 Champions

Ages 14-15 Division

MARYLAND LITTLE LEAGUE / DISTRICT 2

CHARACTER • COURAGE • LOYALTY



Mountain Valley Little League Baseball is part of Maryland District 2 and draws players residing in the Wolfsville, Myersville and Middletown School Districts. Our boundaries are as follows:

**NORTH:** Garfield Road, John Draper Road

**WEST:** Loy Wolfe Road, Pleasant Walk Rd , Monument Road

**SOUTH:** Harley Road , Quebec School Rd, Marker Road, Sumantown Road, Old Middletown Rd, Remsburg Road

**EAST:** Jefferson Blvd, Ridge Road, Gambrell Park Road Tower Road



# MOUNTAIN VALLEY BASEBALL. GOALS

## Growth Objectives

- Increase Participation in existing baseball programs for all youth within the boundaries of the Mountain Valley Baseball District, including Wolfsville, Myersville and Middletown communities
- Expand Baseball Programs to include Little League Challenger Series and Little League Softball

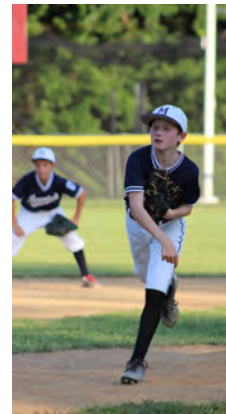


- Establish the Mountain Valley Baseball Club, in addition to Mountain Valley Baseball to offer higher level competitive baseball opportunities for those that desire to play at a higher level of baseball while still participating in and contributing to the success of the Little League programs
- Partner with the Town of Myersville to further develop Doubs Park as the home of Mountain Valley Baseball and a destination baseball program
- Allow the improvements of our facilities and our program to provide increased community outreach via increased community use of the parks in both numbers and kinds of community events held at the parks

- Improve Facilities in order to host independent tournaments during the season as well as hosting District, Regional and State Tournaments for Little League
- Improve safety of our facilities for park visitors, sport attendees and participants







WOLFSVILLE • MYERSVILLE • MIDDLETOWN





# MOUNTAIN VALLEY BASEBALL.

## TARGETED IMPROVEMENTS

### Phase 1

- Field Lighting for both Little League and Babe Ruth fields at Doubs Park
- Permanent outfield fencing for both Little League and Babe Ruth fields
- Safety netting adjacent to Little League field to protect adjacent playground visitors
- Addition of Scorekeeper/Announcer Deck and attendant electronics for Little League field



### Phase 2

- Four Season Batting Cages
- New Scoreboard for the Little League Field at Doubs Field







DOUBS PARK, MYERSVILLE, MD





# MOUNTAIN VALLEY BASEBALL.

## FUNDRAISING PLANS

### Grant Programs

- Currently Mountain Valley Baseball is pursuing grant applications with no less than ten (10) separate grant programs, including state, federal, private and MLB to raise support funds for the achievement of goals listed previously

### In Kind Donations for Installation of Improvements

- Field Lights, Scorekeeper's Deck, Safety Netting, etc.
- "Sweat Equity" of our friends and family

### Corporate Support

- Targeting businesses in the designated district boundary lines of the Mountain Valley Baseball organization with various levels of support available

### Mountain Valley Baseball Booster Club

- Individual and family private support
- Individual investment to benefit our community
- Pride in ownership

### Municipal Entity Support

- Including those municipalities that benefit from our offering of structured community programs for the benefit of their citizens

### Mountain Valley Baseball Fundraiser Events

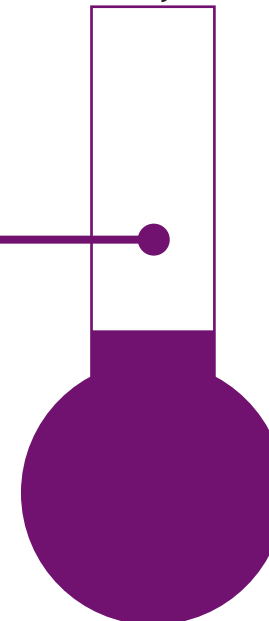
- Separate from financial support of Little League operations
- Sportsman Night (February)
- Opening Day Events Fundraiser (April)
- Hit-A-Thon Program (in season)

**Target.**

**50% Grant Funding**

**50% Private/Public Funding**

**GOAL**  
**\$300,000**







# INVESTING IN THE FUTURE OF OUR COMMUNITY





# MOUNTAIN VALLEY BASEBALL.

## CORPORATE SUPPORT PACKAGES



### Major League Package

#### Corporate Commitment

- Five-year annual support commitment
- \$1,000.00 per year commitment

#### MVB In Return

- Rolling logo advertisement on Mountain Valley Baseball website
- Corporate logo banner (3' x 6') at Doubs Field backstop/fencing during entire season (Spring/Fall)
- Corporate logo/paragraph advertisement in all "A Guide to Mountain Valley" tournament and opening day programs
- Inclusion in corporate support signage/banners at all Mountain Valley Baseball fundraising events (i.e. Sportsman Night, Opening Day, Registration, Tournaments, etc.)
- Inclusion in corporate support signage at all Mountain Valley Fields including Doubs, Harp and Wolfsville
- Availability to participate via tent/booth at opening day events

### Triple-A Package

#### Corporate Commitment

- Five-year annual support commitment
- \$750.00 per year commitment

#### MVB In Return

- Rolling logo advertisement on Mountain Valley Baseball website
- Corporate logo banner (2' x 3') at Doubs Field backstop/fencing during entire season (Spring/Fall)
- Corporate logo advertisement in all "A Guide to Mountain Valley" tournament and opening day programs
- Availability to participate via tent/booth at opening day events

---

#### Sample Banner Configuration





## Double-A Package

### Corporate Commitment

- Five-year annual support commitment
- \$500.00 per year commitment

### MVB In Return

- Rolling logo advertisement on Mountain Valley Baseball website
- Corporate logo advertisement in all “A Guide to Mountain Valley” tournament and opening day programs
- Inclusion in corporate support signage at all Mountain Valley Fields including Doubs, Harp and Wolfsville
- Inclusion in corporate support signage at all Mountain Valley Baseball fundraising events

## Single-A Package

### Corporate Commitment

- Five-year annual support commitment
- \$250.00 per year commitment

### MVB In Return

- Rolling logo advertisement on Mountain Valley Baseball website
- Corporate logo advertisement in all “A Guide to Mountain Valley” tournament and opening day programs



**INVESTING IN OUR CHILDREN FOR A BETTER TOMORROW**





**[www.mountainvalleybaseball.com](http://www.mountainvalleybaseball.com)**  
**email. [mountainvalleybaseball@gmail.com](mailto:mountainvalleybaseball@gmail.com)**

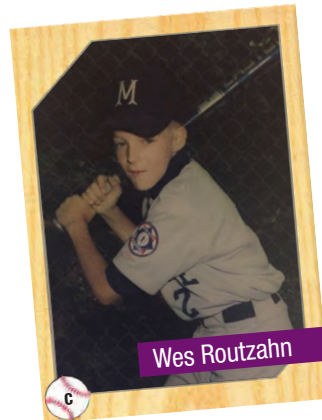
## **Contacts**

### **Mountain Valley Baseball Co-Presidents**

#### **Wesley Routzahn**

301.639.2147

[mountainvalleybaseball@gmail.com](mailto:mountainvalleybaseball@gmail.com)



#### **Justin Clipp**

301.573.1749

[mountainvalleybaseball@gmail.com](mailto:mountainvalleybaseball@gmail.com)

### **Mountain Valley Baseball Fundraising Chairs**

#### **Neal King**

301.748.5399

[nealking@mdpipe.com](mailto:nealking@mdpipe.com)



#### **Mike Hartman**

301.785.8631

[mike.hartman@clarkconstruction.com](mailto:mike.hartman@clarkconstruction.com)

